

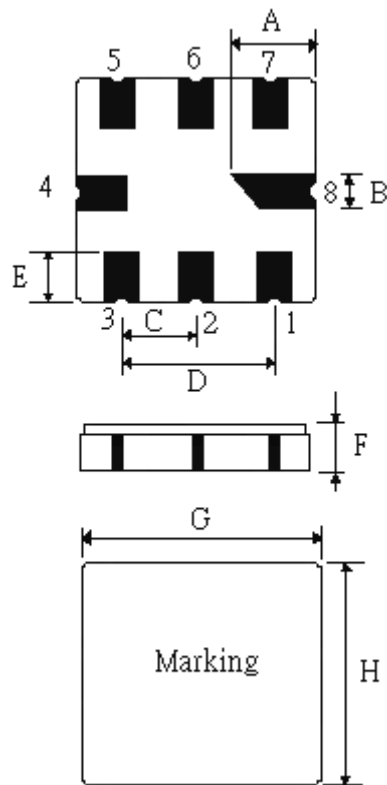
SPECIFICATION OF SAW FILTER

YOKETAN CORP.

Spec no: SM5050F-08020-016-NJ-A

1. Type : SM5050 (Lead Free Parts)

2. Product Dimension



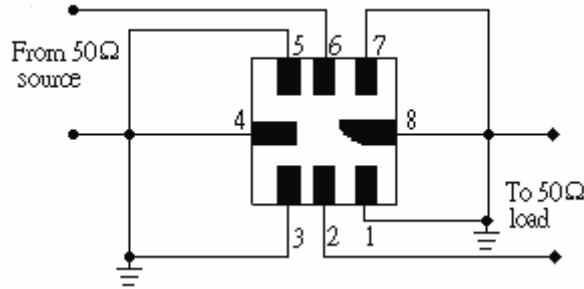
Pin	Connection
2	Input/Output
6	Output/Input
1,3,5,7	To be ground
4,8	Case Ground

Sign	Data (unit:mm)	Sign	Data(unit:mm)
A	2.08±0.15	E	1.2±0.15
B	0.60±0.1	F	1.35±0.15
C	1.27±0.1	G	5.0±0.2
D	2.54±0.1	H	5.0±0.2

SPECIFICATION OF SAW FILTER

YOKETAN CORP.

3. Test Circuit



4. Performance

4-1. Maximum Ratings

Rating	Value	Units
Input Power Level	10	dBm
DC Voltage	12V	VDC
Storage temperature range	-40 to +85	
Soldering Temperature	+235	

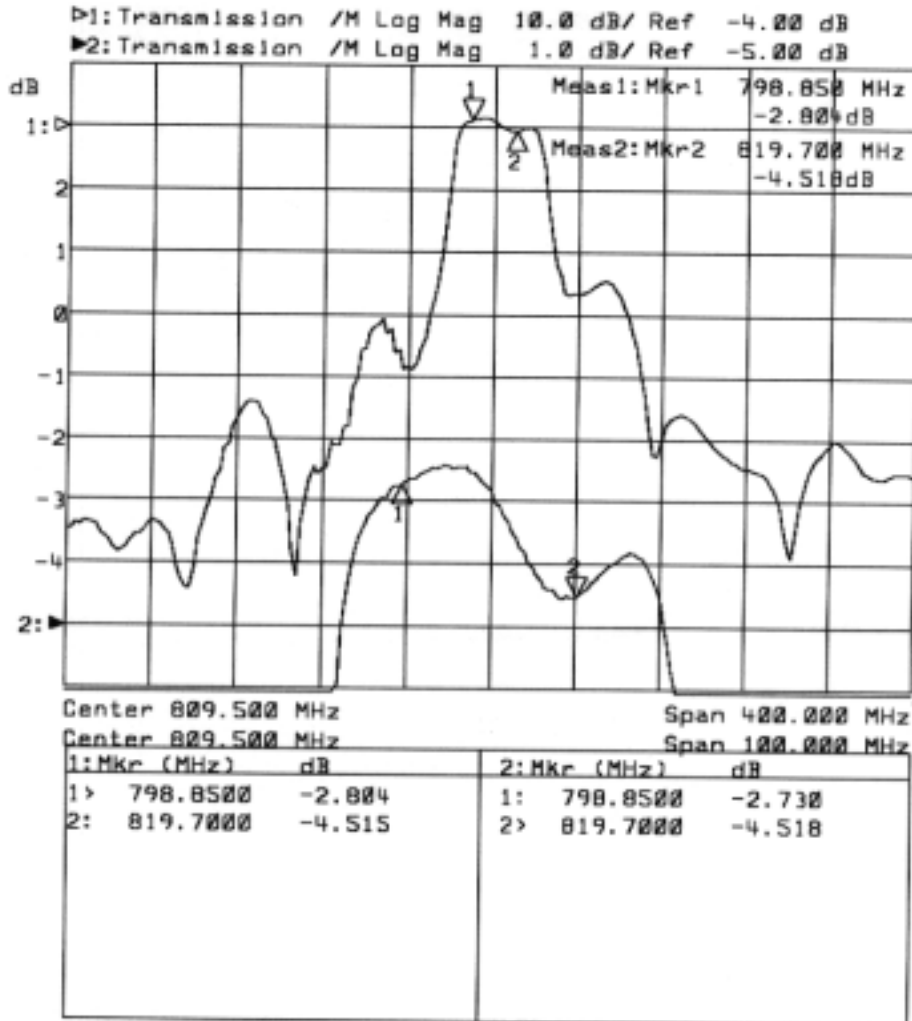
4-2. Electronic Characteristics

Item	Min	Typ	Max	Units
Center Frequency f_c	--	802.000	--	MHz
Insertion Loss $/L$ 794.00 ~ 810.00MHz	--	3.5	6.0	dB
Relative attenuation(relative to $ L$) a_{rel}				
600.00 ~ 665.00 MHz	50	60	--	dB
665.00 ~ 710.00 MHz	30	38	--	
710.00 ~ 760.00 MHz	20	27	--	
840.00 ~ 880.00 MHz	22	30	--	
880.00 ~ 1000.00 MHz	35	45	--	
Input / Output Impedance (Nominal)	50 Ohms			

SPECIFICATION OF SAW FILTER

YOKETAN CORP.

5. Frequency Response



6 Notice

Unless noted otherwise, all measurements are made with the filter installed in the specified test fixture that is connected to a 50Ω test system with VSWR ≤ 1.2:1. The test fixture L and C are adjusted for minimum insertion loss at the filter center frequency, f_c . Note that insertion loss, bandwidth, and passband shape are dependent on the impedance matching component values and quality.