

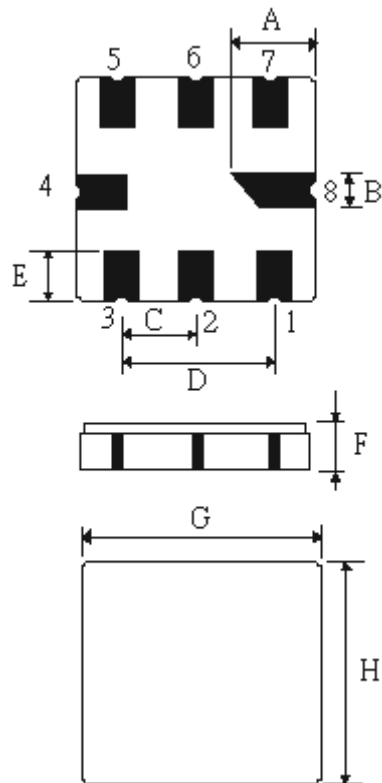
SPECIFICATION OF SAW FILTER

YOKETAN CORP.

Spec no: SM5050F-08000-012-NJ-A

1. Type : SM5050 (Lead Free Parts)

2. Product Dimension



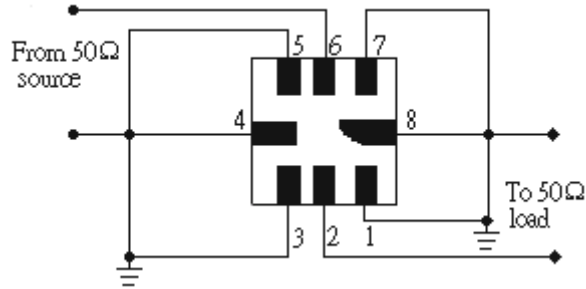
Pin	Connection
2	Input/Output
6	Output/Input
1,3,4,5,7,8	To be ground

Sign	Data (unit:mm)	Sign	Data(unit:mm)
A	2.08±0.15	E	1.2±0.15
B	0.60±0.1	F	1.35±0.15
C	1.27±0.1	G	5.0±0.2
D	2.54±0.1	H	5.0±0.2

SPECIFICATION OF SAW FILTER

YOKETAN CORP.

3. Test Circuit



4. Performance

4-1. Maximum Ratings

Rating	Value	Units
Input Power Level	0	dBm
DC Voltage	0	V
Storage temperature range	-40 to +85	
Soldering Temperature	+235	

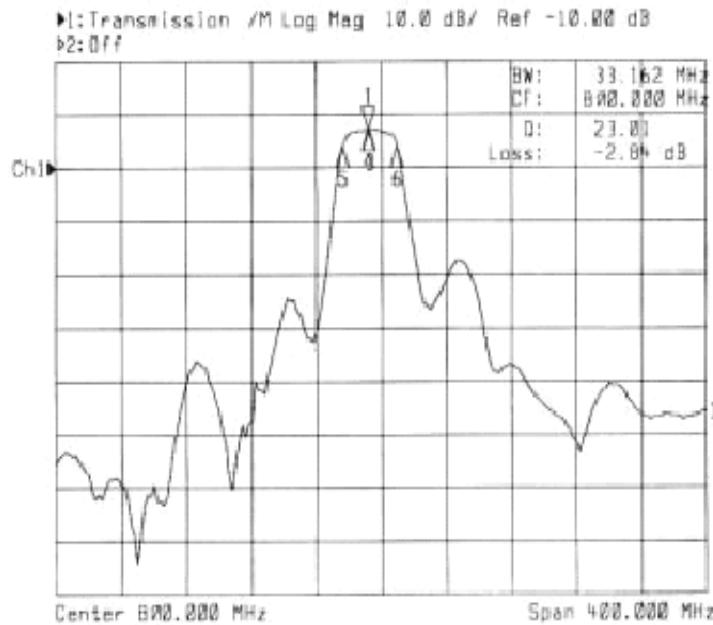
4-2. Electronic Characteristics

Item	Min	Typ	Max	Units
Center Frequency f_c	--	800.000	--	MHz
Insertion Loss IL 794.00 ~ 806.00MHz	--	3.5	5.5	dB
Ripple a 794.00 ~ 806.00MHz	--	1.0	--	dB
Absolute attenuation a				
DC~690 MHz	--	40	--	dB
746~765 MHz	--	20	--	
826~854 MHz	--	20	--	
881~900 MHz	--	40	--	
900~1955 MHz	--	20	--	
Nominal Impedance at f_c	50 Ohms			

SPECIFICATION OF SAW FILTER

YOKETAN CORP.

5. Frequency Response



6 Notice

Unless noted otherwise, all measurements are made with the filter installed in the specified test fixture that is connected to a 50Ω test system with $VSWR \leq 1.2:1$. The test fixture L and C are adjusted for minimum insertion loss at the filter center frequency, f_C . Note that insertion loss, bandwidth, and passband shape are dependent on the impedance matching component values and quality.