

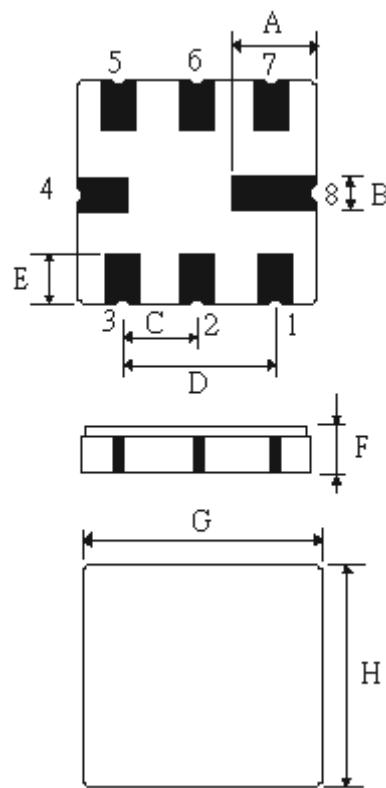
SPECIFICATION OF SAW FILTER

YOKETAN CORP.

Spec no: SM5050F-04800-024-TJ-A

1. Type : SM5050 (Lead Free Parts)

2. Product Dimension



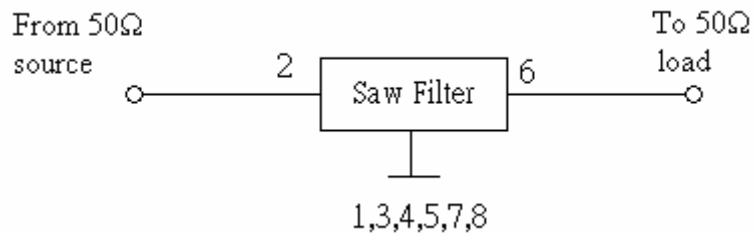
Pin	Connection
2	Input
6	Output
1,3,4,5,7,8	Ground

Sign	Data (unit:mm)	Sign	Data(unit:mm)
A	2.08±0.15	E	1.2±0.15
B	0.60±0.1	F	1.7Max
C	1.27±0.1	G	5.0±0.2
D	2.54±0.1	H	5.0±0.2

SPECIFICATION OF SAW FILTER

YOKETAN CORP.

3. Test Circuit



4. Performance

4-1. Maximum Ratings

Rating		Value	Units
Input Power Level	P	10	dBm
DC Voltage	V_{DC}	3	V
Operable Temperature Range	T_A	0 to +50	
Storage Temperature Range	T_{stg}	-40 to +85	

4-2. Electronic Characteristics

Item		Min	Typ.	Max	Unit
Center Frequency	f_C	--	480	--	MHz
2dB Bandwidth	BW_2	20	24.3		MHz
Insertion Loss	IL	--	1.6	2.8	dB
Absolute Attenuation					
	$f_C - 45$ to $f_C - 100$ MHz	40	56	--	dB
	$f_C + 45$ to $f_C + 55$ MHz	30	56	--	dB
	$f_C + 55$ to $f_C + 100.0$ MHz	40	54	--	dB
Temperature coefficient of frequency		--	-36		ppm/k
Source/Load impedance	$Z_S // Z_L$	50Ω // 50Ω			

SPECIFICATION OF SAW FILTER

YOKETAN CORP.

5. Frequency Response

