

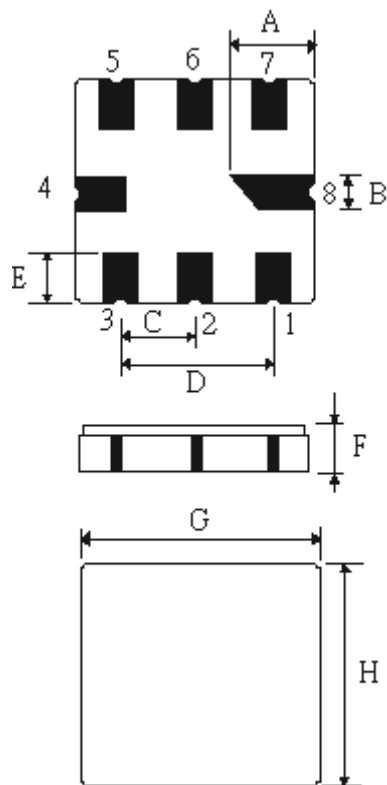
SPECIFICATION OF SAW FILTER

YOKETAN CORP.

Spec no: SM5050F-04260-001-NJ-A

1. Type : SM5050 (Lead Free Parts)

2. Product Dimension



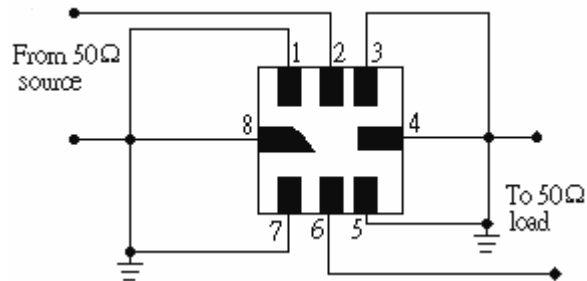
Pin	Connection
2	Input/Output
6	Output/Input
1,3,5,7	To be ground
4,8	Case Ground

Sign	Data (unit:mm)	Sign	Data(unit:mm)
A	2.08±0.15	E	1.2±0.15
B	0.60±0.1	F	1.35±0.15
C	1.27±0.1	G	5.0±0.2
D	2.54±0.1	H	5.0±0.2

SPECIFICATION OF SAW FILTER

YOKETAN CORP.

3. Test Circuit



4. Performance

4-1. Maximum Ratings

Rating	Value	Units
Input Power Level	10	dBm
DC Voltage	12	V
Storage Temperature	-40 to +85	
Soldering Temperature	+235	

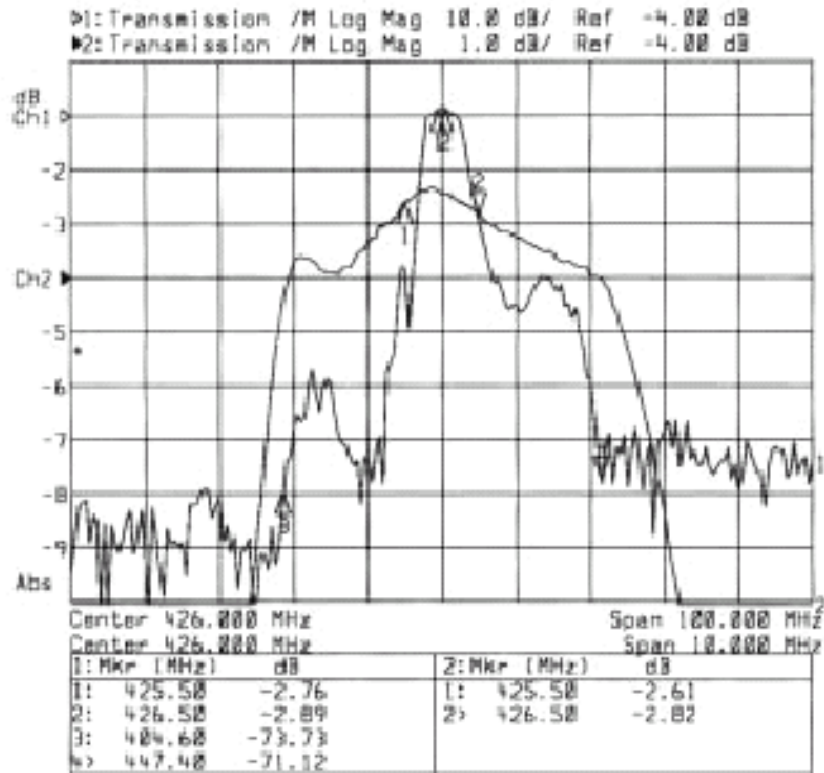
4-2. Electronic Characteristics

Item	Min	Typ	Max	Units
Nominal Center Frequency f_c	--	426.000	--	MHz
Insertion Loss IL 425.500 ~ 426.500 MHz	--	3.0	4.5	dB
Response Variation 425.500 ~ 426.500 MHz	--	--	1.5	dB
Out of Band Rejection(Relative to Through Level) 404.600 MHz 447.400 MHz	58 55	68 65	--	dB
Input and Output VSWR 425.500~426.500 MHz	--	--	2.5	
Input and Output Impedance	50 ohms			

SPECIFICATION OF SAW FILTER

YOKETAN CORP.

5. Frequency Response



6 Notice

Unless noted otherwise, all measurements are made with the filter installed in the specified test fixture that is connected to a 50Ω test system with $VSWR \leq 1.2:1$. The test fixture L and C are adjusted for minimum insertion loss at the filter center frequency, f_c . Note that insertion loss, bandwidth, and passband shape are dependent on the impedance matching component values and quality.