

PECIFICATION OF SAW FILTER

YOKETAN CORP.

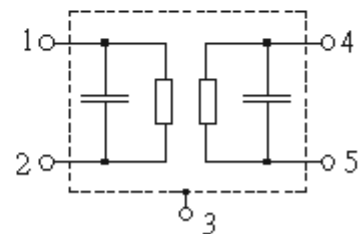
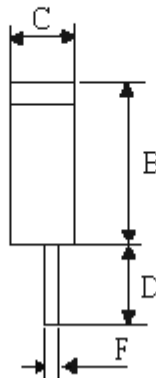
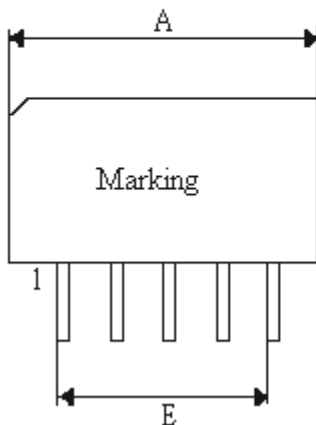
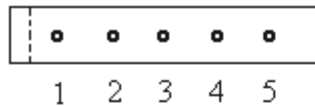
Spec no: SIP5DF-00360-008-NJ-A

1. Features

IF Filter for Digital Cable TV
 Optimized for cascade of two devices
 Plastic Package

2. Type : SIP5D

3. Product Dimension



Pin	Configuration
1,2	Input
4,5	Output
3	Chip carrier- ground

Sign	Data (unit: mm)	Sign	Data(unit: mm)
A	14.5±0.2	E	2.54 (x4)
B	5.8±0.2	F	0.3±0.2
C	2.8±0.2		
D	4.0±0.2		

SPECIFICATION OF SAW FILTER

YOKETAN CORP.

4. Performance

4-1. Maximum Ratings

Rating	Value
Operable Temperature Range T_A	-25 to +65
Storage Temperature Range T_{stg}	-40 to +85
DC Voltage (between any terminals) V_{DC}	12V
AC Voltage (between any terminals) V_{pp}	10V

4-2. Electronic Characteristics

Reference temperature: $T_A = 25\text{ }^\circ\text{C}$
 Terminating source impedance: $Z_S = 50\ \Omega$
 Terminating load impedance: $Z_L = 2\ \text{k}\Omega \parallel 3\ \text{pF}$

Item	Min	Typ.	Max.	Unit
Insertion attenuation IL Reference level for the following data 36.00 MHz	19.0	20.5	22.0	dB
Amplitude ripple (p-p) 32.35...39.65 MHz	--	0.7	--	dB
Pass bandwidth				
rel 1.5dB $BW_{1.5dB}$	--	7.7	--	MHz
rel 3 dB BW_{3dB}	--	8.0	--	MHz
rel 15 dB BW_{15dB}	--	8.9	--	MHz
rel 30dB BW_{30dB}	--	9.4	--	MHz
Relative attenuation rel				
31.65 MHz	8.0	12.0	--	dB
40.35 MHz	6.0	9.0	--	dB
31.30 MHz	22.0	32.0	--	dB
40.70 MHz	20.0	27.0	--	dB
Lower sidelobe 25.00...31.00 MHz	35.0	40.0	--	dB
Upper sidelobe 41.00...45.00 MHz	32.0	38.0	--	dB
Reflected wave signal suppression 1.0 μ s 6.0 μ s after main pulse (test pulse 250ns, carrier frequency 36.00MHz)	42.0	52.0	--	dB
Feedthrough signal suppression 1.3 μ s 1.2 μ s before main pulse (test pulse 250ns, carrier frequency 36.00MHz)	42.0	52.0	--	dB
Group delay ripple(p-p) $\Delta\tau$ 32.35...39.65 MHz	--	50	--	ns
Temperature coefficient of frequency TC_f	--	-72	--	ppm/K

SPECIFICATION OF SAW FILTER

YOKETAN CORP.

5. Frequency Response

