

PECIFICATION OF SAW FILTER

YOKETAN CORP.

Spec no: SIP5DF-00361-006-NJ-A

1. Features

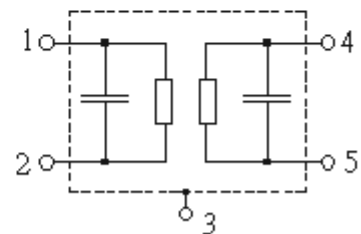
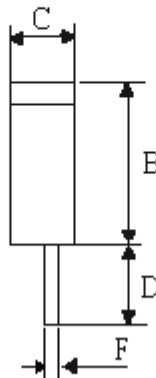
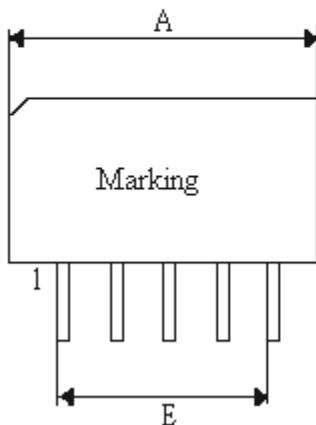
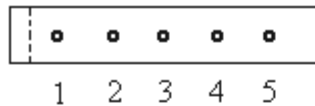
IF Filter for Digital Cable TV

3dB bandwidth : 6.0MHz

Plastic Package

2. Type : SIP5D

3. Product Dimension



Pin	Configuration
1,2	Input
4,5	Output
3	Chip carrier- ground

Sign	Data (unit: mm)	Sign	Data(unit: mm)
A	14.5±0.2	E	2.54 (x4)
B	5.8±0.2	F	0.3±0.2
C	2.8±0.2		
D	4.0±0.2		

SPECIFICATION OF SAW FILTER

YOKETAN CORP.

4. Performance

4-1. Maximum Ratings

Rating		Value
Operable Temperature Range	T_A	-25 to +65
Storage Temperature Range	T_{stg}	-40 to +85
DC Voltage (between any terminals)	V_{DC}	12V
AC Voltage (between any terminals)	V_{pp}	10V

4-2. Electronic Characteristics

Reference temperature: $T_A = 25\text{ }^\circ\text{C}$
 Terminating source impedance: $Z_S = 50\text{ }\Omega$
 Terminating load impedance: $Z_L = 2\text{ k}\Omega \parallel 3\text{ pF}$

Item		min.	typ.	Max.	Unit
Center frequency (Center between 3 dB points)	f_c	—	36.125	—	MHz
Insertion attenuation Reference level for the following data	IL 36.13 MHz	16.0	17.5	19.0	dB
Pass bandwidth					
$\alpha_{rel} \leq 3\text{ dB}$	BW_{3dB}	5.8	6.0	6.2	MHz
$\alpha_{rel} \leq 30\text{ dB}$	BW_{30dB}	7.4	7.6	7.8	MHz
Relative attenuation	α_{rel}				
	33.59 MHz	-0.4	0.8	2.0	dB
	38.65 MHz	-1.0	0.2	1.4	dB
	33.12 MHz	1.8	3.0	4.2	dB
	39.12 MHz	1.1	2.3	3.5	dB
Lower sidelobe	25.00 ... 32.12 MHz	25.0	30.0	—	dB
Upper sidelobe	40.12 ... 41.42 MHz	26.0	33.0	—	dB
	41.42 ... 45.00 MHz	28.0	35.0	—	dB
Reflected wave signal suppression					
1.3 μs ... 6.0 μs after main pulse (test pulse 250 ns, carrier frequency 36.13 MHz)		42.0	52.0	—	dB
Feedthrough signal suppression					
1.3 μs ... 1.2 μs before main pulse (test pulse 250 ns, carrier frequency 36.13 MHz)		50.0	56.0	—	dB
Group delay ripple (p-p)	$\Delta\tau$				
	32.12 ... 39.12 MHz	—	40	—	ns
Temperature coefficient of frequency	TC_f	—	-72	—	ppm/K

SPECIFICATION OF SAW FILTER

YOKETAN CORP.

5. Frequency Response

