

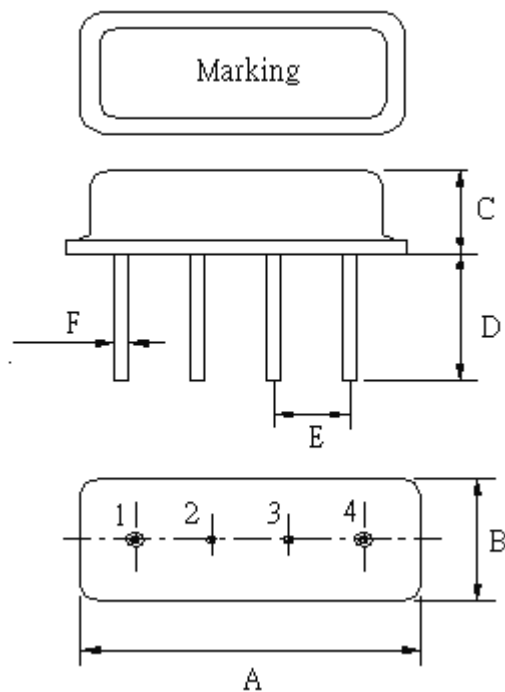
SPECIFICATION OF SAW FILTER

YOKETAN CORP.

Spec no: F11F-01730-R14-NJ-A

1. Type : F11

2. Product Dimension



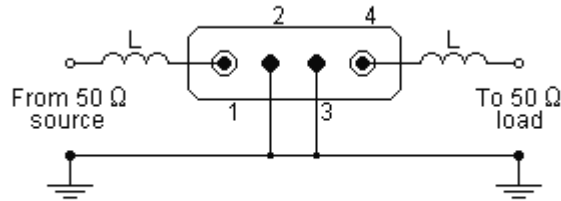
Pin	Configuration
1	Input / Output
4	Output/Input
2,3	Case Ground

Sign	Data (unit: mm)	Sign	Data(unit: mm)
A	11.0±0.3	E	2.54±0.2
B	4.5±0.3	F	0.45±0.2
C	3.2±0.3		
D	5.0±0.5		

SPECIFICATION OF SAW FILTER

YOKETAN CORP.

3. Test Circuit



L=12 turns of 0.51mm insulated copper, 4.0mm ID

4. Performance

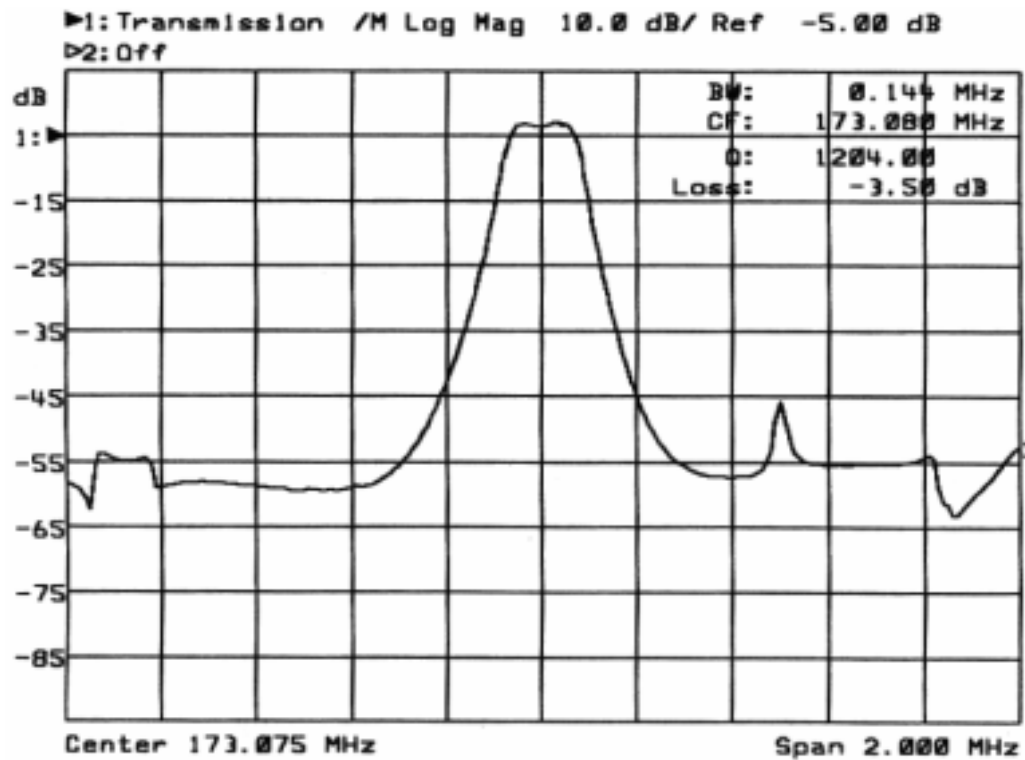
4-1. Maximum Ratings

Rating		Value	Units
CW RF Power Dissipation	P	20	dBm
DC Voltage	V_{DC}	± 30	V
Operable Temperature Range	T_A	-10 to +65	
Storage Temperature Range	T_{stg}	-40 to +85	

4-2. Electronic Characteristics

Item		Min.	Typ.	Max.	Unit
Center Frequency	f_C	--	173.075	--	MHz
Insertion Loss	IL				
	within $f_C \pm 20\text{kHz}$	--	3.5	4.8	dB
3dB Pass Band	BW_3		140		KHz
User Signal Band Width		± 20			KHz
Pass band ripple	$\Delta\alpha$				
	within $f_C \pm 20\text{kHz}$	--	--	± 0.5	dB
Absolute Attenuation	α				
	$f_C - 40\text{MHz}$	--	45	--	dB
Temperature	Turnover Temperature T_O	+15		+40	
Stability	Frequency Temperature Coefficient FTC		0.032		ppm/ ²
Frequency Aging Absolute Value during the First Year $ fA $			$\leq \pm 10$		ppm/yr

5. Frequency Response



6 Notice

Unless noted otherwise, all measurements are made with the filter installed in the specified test fixture that is connected to a 50Ω test system with $VSWR \leq 1.2:1$. The test fixture L and C are adjusted for minimum insertion loss at the filter center frequency, f_c . Note that insertion loss, bandwidth, and passband shape are dependent on the impedance matching component values and quality.