

SPECIFICATION OF SAW FILTER

YOKETAN CORP.

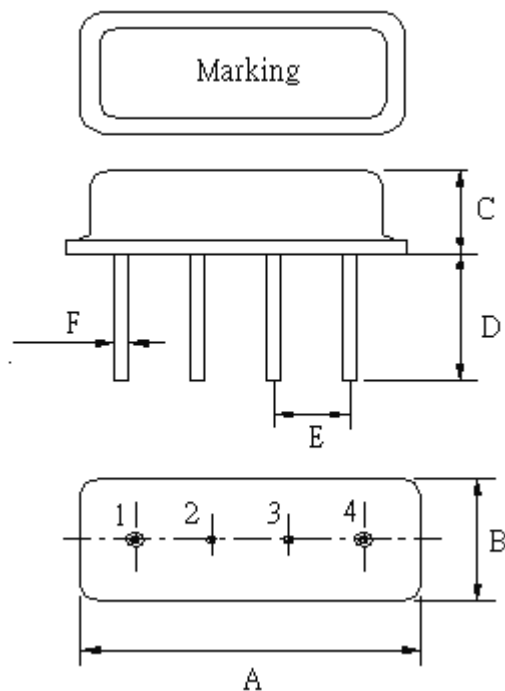
Spec no: F11F-BP139~171-NJ-A

1. Features

This specification shall cover the characteristics of Saw Filter with F139 , F147 , F155 , F163 , F171.

2. Type : F11

3. Product Dimension



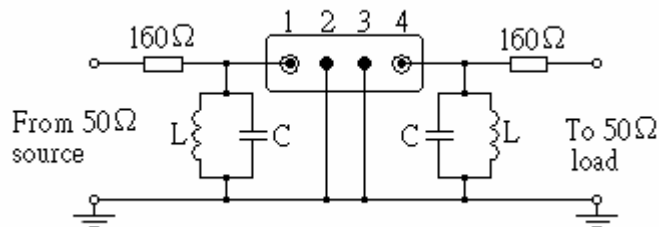
| Pin | Configuration |
|-----|---------------|
| 1 | Terminal 1 |
| 4 | Terminal 2 |
| 2,3 | Case Ground |

| Sign | Data (unit: mm) | Sign | Data(unit: mm) |
|------|------------------|------|-----------------|
| A | 11.0±0.3 | E | 2.54±0.2 |
| B | 4.5±0.3 | F | 0.45±0.2 |
| C | 3.2±0.3 | | |
| D | 5.0±0.5 | | |

SPECIFICATION OF SAW FILTER

YOKETAN CORP.

4. Test Circuit



5. Performance

5-1. Maximum Ratings

| Rating | | Value |
|-----------------------|-----|---------------|
| DC Voltage | VDC | +15V Max |
| AC Voltage | VPP | 10V 50Hz/60Hz |
| Operation temperature | | -40~+85 |
| Storage temperature | | -45~+85 |
| RF Power Dissipation | | 0dBm |

5-2. Electronic Characteristics

| Part number | F139 | F147 | F155 | F163 | F171 | Unit |
|---------------------------|-------------|-------------|-------------|-------------|-------------|-------|
| Nominal center frequency | 139.0 | 147.0 | 155.0 | 163.0 | 171.0 | MHz |
| Insertion Loss | | | | | | |
| fC -100MHz to fC-46.8MHz | 50 min. | 50 min. | 50 min. | 50 min. | 50 min. | dB |
| fC -46.8MHz to fC-38.8MHz | 50 min. | 50 min. | 50 min. | 50 min. | 50 min. | dB |
| fC±4.0MHz | 6.5 max | 6.5 max | 6.5 max | 6.5 max | 6.5 max | dB |
| fC +38.8MHz to 2.5×fC | 42 min | 42 min | 42 min | 42 min | 42 min | dB |
| Input/Output Impedance | 210// -13.3 | 210// -12.1 | 210// -12.3 | 210// -11.0 | 210// -10.9 | Ω//pF |

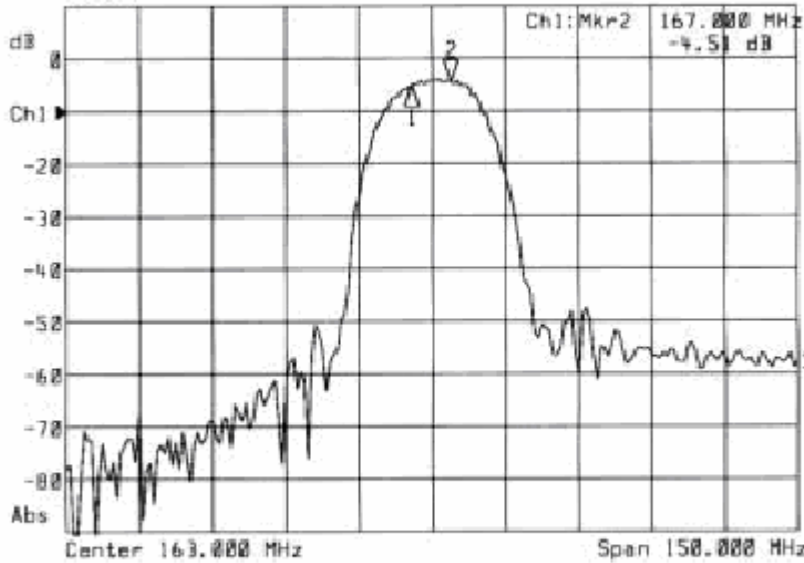
SPECIFICATION OF SAW FILTER

YOKETAN CORP.

6. Frequency Response

F163

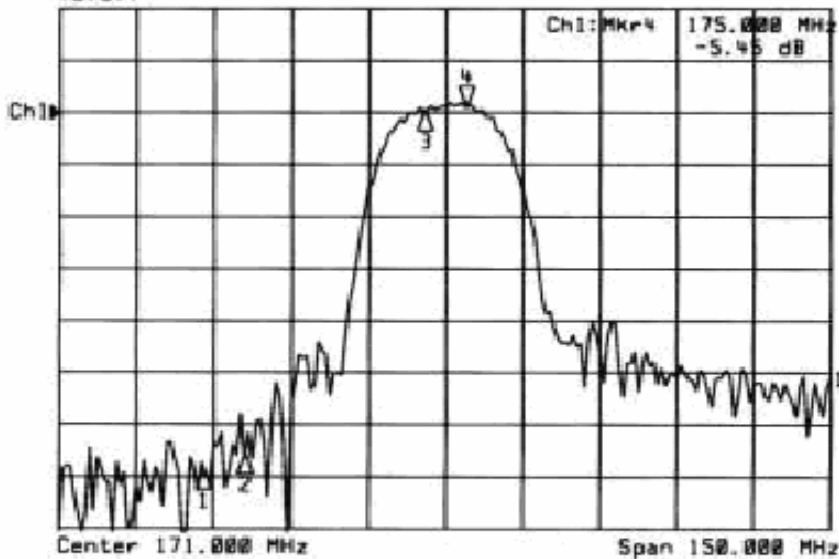
#1: Transmission /M Log Mag 10.0 dB/ Ref -10.00 dB
#2: Off



| 1: Mkr (MHz) | dB | 2: Mkr (MHz) | dB |
|--------------|-------|--------------|----|
| 1: 159.00 | -5.03 | | |
| 2: 167.00 | -4.49 | | |

F171

#1: Transmission /M Log Mag 10.0 dB/ Ref -6.50 dB
#2: Off



| 1: Mkr (MHz) | dB | 2: Mkr (MHz) | dB |
|--------------|--------|--------------|----|
| 1: 124.20 | -74.96 | | |
| 2: 132.20 | -71.67 | | |
| 3: 167.00 | -5.87 | | |
| 4: 175.00 | -5.45 | | |